

Feature

Twin purge design
Used to fill, drain and refill any closed loop system
400# WOG
DZR brass body
Full port design
Chrome plated ball
(2) High flow hose drains with cap and chain
Adjustable packing gland
PEX ASTM F1960 connections
Virgin PTFE seats
Blow-out proof stem

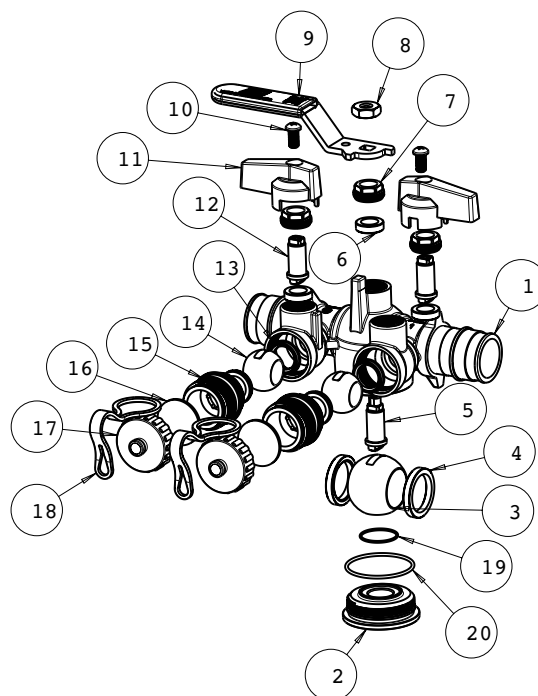
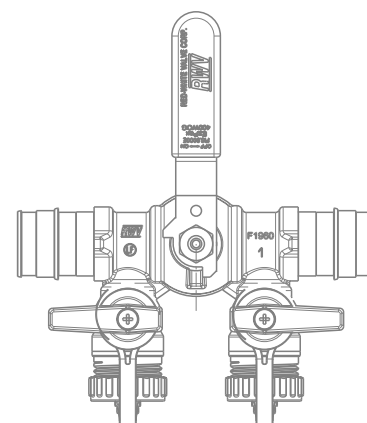


Working conditions:

Water: from 15°F to 260°F
below 32°F only for water with added antifreezing fluids
over 212°F only for water with added anti-boiling fluids

Material

	Part	Material	Specification
1	Body	DZR Lead Free Brass	ASTM B30 C87850
2	Ring nut	DZR Lead Free Brass	ASTM B927 C27453
3	Ball	DZR LF Brass / Cr plated	ASTM B927 C27453
4	Seat	PTFE	-
5	Stem	DZR Brass	ASTM B927 C27453
6	Packing ring	PTFE	-
7	Packing nut	Brass	ASTM B124 C37700
8	Nut	Steel / Zn plated	ASTM A36
9	Handle	Steel / Dacromet® plated	ASTM A36
10	Screw	Steel / Zn plated	ASTM A36
11	Handle	Aluminum	ASTM B85
12	Stem	DZR Lead Free Brass	ASTM B927 C27453
13	Seat	PTFE	-
14	Ball	DZR LF Brass / Cr plated	ASTM B927 C27453
15	Fixed end	DZR Lead Free Brass	ASTM B927 C27453
16	Drain cap gasket	EPDM Perox	NSF approved
17	Drain cap	Brass	ASTM B283 C37700
18	Tie	Rubber	-
19	O-ring	EPDM Perox 70SH	NSF approved
20	O-ring	EPDM Perox 70SH	NSF approved



Dimension, Weight

Size	φA [in]	B [in]	φC [in]	D [in]	E [in]	F [in]	G [in]	H [in]	L [in]	φP [in]	Wt. [lb]
3/4"	PEX F1960	1.80	0.50	3/4-11.5NH	4.72	2.62	5.96	2.12	3.60	0.60	1.57
1"	PEX F1960	2.11	0.50	3/4-11.5NH	5.51	2.62	6.36	2.26	3.60	0.80	1.86

