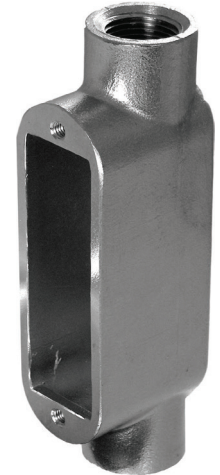


## STAINLESS STEEL C CONDUIT BODIES

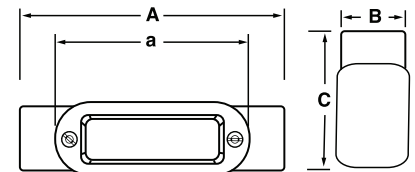
### Features:

- Manufactured in type 316 stainless steel to meet any stringent sanitary condition
- Polished with standard “brite” finish to increase corrosion resistance and aesthetic appearance
- Solid stainless construction permits easy installation using ordinary hand tools
- The flat back design allows extra wiring capacity
- No package quantity required
- Cover and Gasket set included
- Form 8 style
- FDA Approved, white neoprene gaskets
- Use of hex head cap screws helps prevent any harboring points



### Certifications and Compliances:

- UL 514A Listed
- UL File # E307133
- CSA C22.2 No. 18.1
- NSF/ANSI 169 Certified
- 21CFR175.300 / FDA approved neoprene gasket
- Intended for installation in accordance with Article 314 of ANSI/NFPA 70, National Electrical Code (NEC)
- Approved for wet locations, IP69 Rated



### Materials:

- Body: 316SS
- Gasket: Neoprene
- Cover and Screws: 316SS

### Applications:

To connect and change direction of conduit runs. Can be used as pulling fittings. Accessible wiring chamber provides a spacious location to make splices.



Part Number	Trade Size (in)	A (in)	B (in)	C (in)	a (in)	Cubic Inches (in)	Weight per each (lb)
S60500CE00	½	5.994	1.320	1.700	4.320	5	1.23
S60700CE00	¾	6.538	1.550	1.975	4.950	9	1.75
S61000CE00	1	7.690	1.750	2.225	5.650	13	2.46
S61200CE00	1¼	8.695	2.170	2.630	6.530	24	3.64
S61500CE00	1½	9.898	2.530	3.095	7.810	35	4.81
S62000CE00	2	12.554	3.460	3.353	10.000	77	7.46

All dimensions are for informational purposes only \*Tolerances +/- 5%

