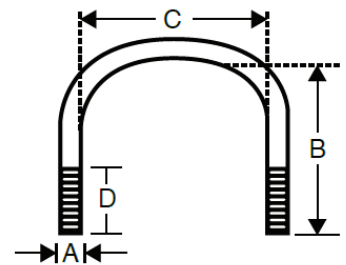


STAINLESS STEEL FLATRAIL - U-BOLTS

Features:

- Manufactured in type 316 stainless steel for increased corrosion resistance
- Polished with standard “brite” finish to increase corrosion resistance and aesthetic appearance
- Figure 137 Style
- Two type 316 stainless steel acorn nuts and two fender washers included
- No package qty. required



Applications:

Used to mount and secure stainless conduit onto FlatRail sanitary strut systems.

Part Number	Size (in)	A (in)	B (in)	C (in)	D (in)	Weight each per (lb)
S60500FRUBBR	1/2	3/8	1.510	0.928	0.530	0.17
S60700FRUBBR	3/4	3/8	1.720	1.180	0.530	0.18
S61000FRUBBR	1	3/8	1.985	1.400	0.530	0.20
S61200FRUBBR	1 1/4	3/8	2.330	1.810	0.530	0.22
S61500FRUBBR	1 1/2	3/8	2.570	2.030	0.530	0.24
S62000FRUBBR	2	3/8	2.960	2.500	0.530	0.33

All dimensions are for informational purposes only *Tolerances +/- 5%



For more info visit atkore.com/calbrite 