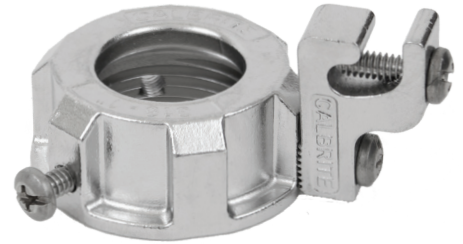



STAINLESS STEEL GROUNDING BUSHINGS

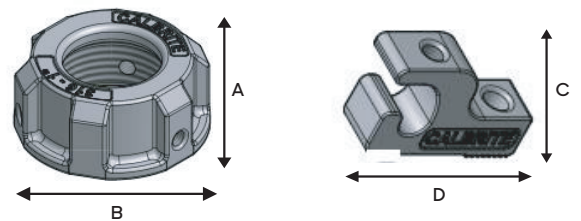
Features:

- Manufactured in type 316 stainless steel for increased corrosion resistance
- Polished with standard “brite” finish to increase corrosion resistance and aesthetic appearance
- Set screw provides fixed alignment and positive ground continuity
- Allows easy insertion of grounding conductor for thru or end connection
- No package quantity required



Certifications and Compliances:

- UL 467 / CSA C22-41 Listed (Standard for Grounding and Bonding Equipment) 
- UL 514B / CSA C22.2-18.3 Listed (Standard for Conduit, Tubing and Cable Fittings)
- UL 486A-486B / CSA C22.2-65-13 Listed (Standard for Safety for Wire Connectors)
- UL File # E352416



Applications:

For use on stainless steel Rigid or threaded IMC conduit, to provide a means of grounding conduit through a bushing.



Part Number	Trade Size (in)	A (in)	B (in)	C (in)	D (in)	Grounding Screw (in)	Weight per each (lb)
S60700GB00	½	0.732	1.560	1.313	0.850	10-24 X ¾	0.270
S61000GB00	¾	0.824	1.900	1.313	0.850	10-24 X ¾	0.380
S61500GB00	1½	0.840	2.440	1.313	0.850	10-24 X ¾	0.480

All dimensions are for informational purposes only *Tolerances +/- 5%

