

# STAINLESS STEEL LOCKNUTS

## Features:

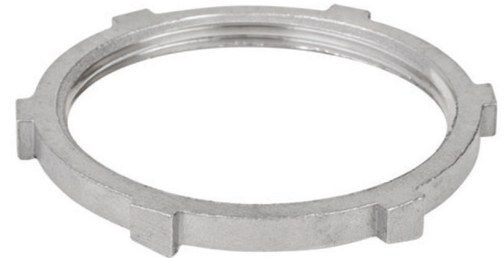
- Made from type 316 stainless steel for increased corrosion resistance
- Polished with standard “brite” finish to increase corrosion resistance and aesthetic appearance
- No package quantity required

## Certifications and Compliances:

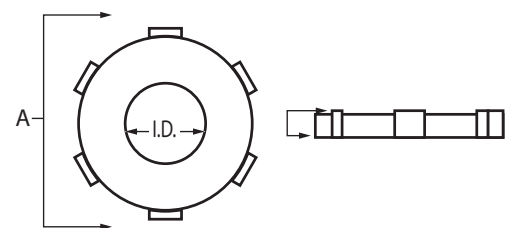
- UL514B Listed
- UL File # E308159
- All locknuts are intended to be installed in accordance with ANSI/NFPA 70, National Electrical Code (NEC)

## Applications:

Used to connect threaded conduit or connector to a threadless opening in a box, enclosure or fitting. Heavy stock thickness and specially designed tabs tighten securely and will not easily loosen even in the most severe applications.



Part Number	Trade Size (in)	A (in)	ID (in)	Wall Thickness (in)	Weight per each (lb)
S60500LN00	½"	1.250"	0.760"	0.138"	0.02
S60700LN00	¾"	1.450"	0.975"	0.173"	0.03
S61000LN00	1"	1.820"	1.210"	0.200"	0.06
S61200LN00	1-¼"	2.200"	1.570"	0.216"	0.07
S61500LN00	1-½"	2.450"	1.810"	0.216"	0.08
S62000LN00	2"	2.930"	2.300"	0.233"	0.10
S62500LN00	2-½"	3.560"	2.760"	0.233"	0.16
S63000LN00	3"	4.220"	3.410"	0.235"	0.20
S64000LN00	4"	5.260"	4.410"	0.236"	0.25



All dimensions are for informational purposes only \*Tolerances +/- 5%

