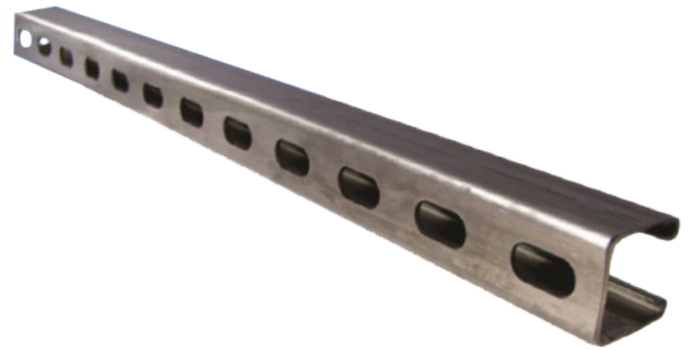


### Features

- Manufactured in both type 304 and 316 stainless to meet any stringent sanitary condition
- Polished to a bright, easily maintainable finish that is modern, attractive, easy to clean, and that also enhances the surface's resistance to pitting and bacterial corrosion
- Calbrite stainless steel strut functions in exactly the same way as any other metallic strut
- Channels provided by Calbrite are available in 12 different basic sizes which are subjected to further variation in gauge and depth



### Certifications and Compliances

- UL 5B Listed
- For installation in accordance with Article 384 of ANSI/NFPA 70, National Electrical Code (NEC)

### Applications

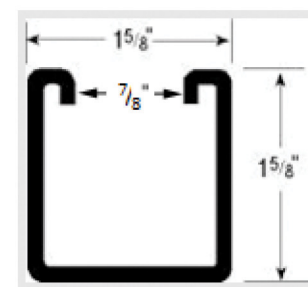
The Calbrite system of metal framing is based on the use of a continuous slotted channel, and a series of brackets and fittings, which can be fastened to it any point. With Calbrite channel and components, racks, supports for conduit, wiring, electrical equipment, machine frames, and a limitless variety of structures can be built rapidly, simply and economically.

### Industries Commonly Served:

- Food & Beverage Production
- Water & Wastewater Treatment
- Petrochemical Operations
- Marine & Coastal Facilities
- Pharmaceuticals & Cosmetics
- Pulp & Paper Mills
- Chemical Plants
- Refining & Extraction Sites
- Along with other corrosive environment

Part Number		Size	Width of Hole	Length of Hole	Distance Between Holes	Width of Lip	Sectional Area	Weight per L.F.
Type 304	Type 316	in	in	in	in	in	sq. in	lbs
S45810ST58	S65810ST58	1 5/8 x 1 5/8	7/16	1 1/8	7/8	3/8	.559	1.65

All dimensions are for informational purposes only \*Tolerances +/- 5%



12 Gauge