

STAINLESS STEEL GROUNDING LOCKNUTS

Features:

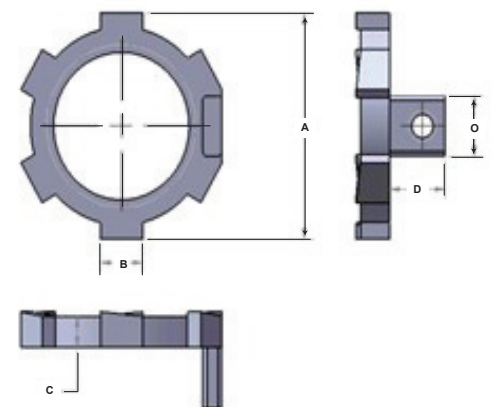
- Manufactured in type 316 stainless steel for increased corrosion resistance
- Polished with standard “brite” finish to increase corrosion resistance and aesthetic appearance
- Type 316 stainless steel grounding lug and screw included
- No package quantity required

Applications:

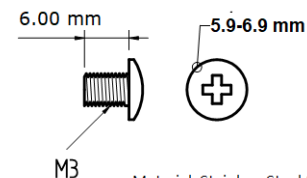
Used to connect threaded conduit or connector to a threadless opening in a box, enclosure, or fitting. Provides a secure connection for grounding applications. This heavy-duty grounding locknut is manufactured in type 316 stainless steel for superior strength and corrosion resistance.



Part Number	Trade Size (in)	A (in)	B (in)	C (in)	D (in)	Weight per each (lb)
S60500LNWG	½	1.250	.250	.140	.251	0.02
S60700LNWG	¾	1.610	.316	.221	.495	0.08
S61000LNWG	1	1.870	.387	.260	.500	0.10
S61200LNWG	1¼	2.280	.390	.260	.500	0.12
S61500LNWG	1½	2.570	.445	.270	.500	0.16
S62000LNWG	2	3.100	.612	.280	.505	0.22
S62500LNWG	2½	3.630	.654	.375	.625	0.36
S63000LNWG	3	4.320	.690	.375	.625	0.46
S64000LNWG	4	5.380	.765	.440	.630	0.66



All dimensions are for informational purposes only *Tolerances +/- 5%



Material: Stainless Steel 316

