

Stainless Steel Square Washers

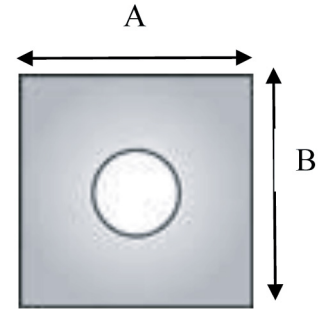
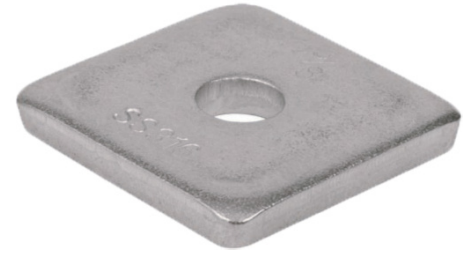
Atkore Calbrite's stainless steel Square Washers are designed for connecting stainless steel strut and a variety of stainless steel strut accessories.

Features

- Manufactured to meet ASTM standards
- Manufactured in type 316 stainless steel to meet any stringent sanitary condition
- Polished with standard "brite" finish to increase corrosion resistance and aesthetic appearance
- Designed for use with 1 5/8" stainless steel strut
- No package qty. required

Commonly Served Industries

- Food & Beverage Production
- Marine & Coastal Facilities
- Chemical Plants
- Water & Wastewater Treatment
- Pharmaceuticals & Cosmetics
- Refining & Extraction Sites
- Petrochemical Operations
- Pulp & Paper Mills
- Along with other corrosive environments



Part Number	Dimensions (in)					Weight (ea.) per lbs.
	Size	A	B	Inside Diameter	Thickness	
S60200SW00	1/4	1.600	1.600	0.250	0.250	0.13
S60300SW00	3/8	1.600	1.600	0.375	0.250	0.16
S60500SW00	1/2	1.600	1.600	0.500	0.250	0.15
S60600SW00	5/8	1.600	1.600	0.625	0.250	0.14

*All dimensions are for informational purposes only *Tolerances +/- 5%