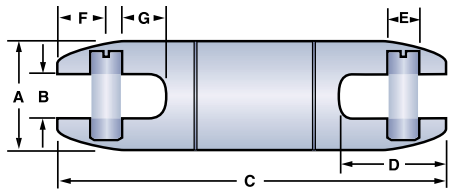




## BALL BEARING SWIVELS

### 821 Champion Swivels

Designed to meet common dimensional specifications, the 821 Champion Swivels are designed for underground and overhead cable pulling applications and can handle all types of utility cable. Precision machined stainless steel. Clevis pin is easily replaceable (see ordering information below).



**!** Not designed to be pulled around bullwheels or sheaves.

Part Number	WORKING LOAD				DIMENSIONS													
	*Underground		** Aerial		A		B		C		D		E		F		G	
	(LBS.)	(N)	(LBS.)	(N)	(IN.)	MM	(IN.)	MM	(IN.)	MM	(IN.)	MM	(IN.)	MM	(IN.)	MM	(IN.)	MM
08210007	1800	8006	1080	4804	0.875	22	0.31	8	3.09	78	0.84	21	0.31	8	0.38	10	0.31	8
08210012	4000	17792	2400	10675	1.25	32	0.59	15	4.52	115	1.22	31	0.37	9	0.44	11	0.60	15
08210014	7500	33360	4500	20016	1.44	37	0.59	15	5.47	139	1.41	36	0.43	11	0.59	15	0.60	15
08210018	10000	44480	6000	26689	1.88	48	0.75	19	7.07	179	1.86	47	0.62	16	0.80	20	0.76	19

\* 3:1 Safety Factor  
\*\*5:1 Safety Factor

#### Replacement Clevis Pins for 821 Champion Swivels

Part Number	Replacement Part Number, Slotted Pin
08210007	08210105
08210012	08210115
08210014	08210125
08210018	08210135



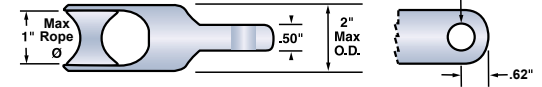
SWIVELS & ACCESSORIES

SWIVELS & ACCESSORIES

## SWIVEL ACCESSORIES

### Rope to Swivel Clevis Tang

Used to connect the swivel to rope up to 1" (25 mm) in diameter. To be used with 1 1/4" (32 mm), 1 3/8" (35 mm), 1 1/2" (41 mm) & 2" (51 mm) 808 Champion Swivels. Precision machined stainless steel.



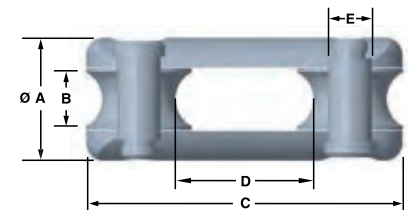
Part Number	Swivel Size		Max O.D.		Load Rating		Replacement Roller	Replacement Pin
	(in)	(mm)	(in)	(mm)	(lbs)	(N)	Part Number	Part Number
08091230	1 1/4-2	32-51	2	51	10,000	44,480	08091221	08091222



### Rope to Rope/Grip Clevis

Versatile clevis provides efficient link for several applications. Stainless steel construction. Combinations of sheaves and pins allow the following connections:

- Rope to rope
- Rope to forged eye pulling grip
- Forged eye pulling grip to forged eye pulling grip
- Rope to flexible eye pulling grip



Part Number	FOR MAX ROPE Ø		DIMENSIONS								Replacement Roller	Replacement Pin	Load Capacity			
	(IN.)	MM	A	B	C	D	E	(IN.)	MM	(IN.)	MM	Part Number	Part Number	(lbs)	(N)	
08091200	7/8	22	1.75	44	0.91	23	4.50	114	1.96	50	0.62	16	08091202	08091201	10,000	44,482



## SWIVEL ACCESSORIES



SWIVELS & ACCESSORIES

Part Number	Swivel Size (in)	Swivel Size (mm)	SWIVEL COMPATIBILITY CHART				
			Pulling Eye Size Range		Eye to Eye Connectors Size (Part Number)	Pulling Harnesses	
			Standard Head Reusable Power Pulling Eyes Cable Size	Fixed Head Innerduct Pulling Eyes (Part Number)		Separate Leg Ends	Large Front Link Size (Part Number)
08017000	5/8	16	-	-	-	1/8", 1/4"	-
08016000	7/8	22	-	-	-	1/8", 1/4"	-
08080912	1-1/4	32	1/0 AWG - 250 kcmil	08914110, 08914120, 08914130, 08914140	(3/8") 08050300 (1/2") 08050500	All	(1/8"-08549200) (1/4"-08549230, 08549325, 08569910, 08549326) (1/2"-08549331)
08080913	1-3/8	35	1/0 AWG - 250 kcmil	08914110, 08914120, 08914130, 08914140	(3/8") 08050300	All	(1/8"-08549200) (1/4"-08549230, 08549325, 08569910, 08549326) (1/2"-08549331)
08080916	1-5/8	41	-	-	(3/8") 08050300 (1/2") 08050500	All	(1/8"-08549200) (1/4"-08549230, 08549325, 08569910, 08549326) (1/2"-08549331)
08080920	2	51	350 kcmil - 1,000 kcmil	-	All	All	(1/8"-08549200) (1/4"-08549230, 08549325, 08569910, 08549326) (1/2"-08549331)
08080925	2-1/2	64	1250 kcmil - 3,000 kcmil	-	(1/2") 08050500 (3/8") 08050501	All Cables	All
08080930	3	76	-	-	(1/2") 08050500 (3/8") 08050501	All Cables	All
08210007	7/8	22	-	-	-	1/8", 1/4"	-
08210012	1-1/4	32	1/0 AWG - 250 kcmil	All	(3/8") 08050300 (1/2") 08050500	All	(1/8"-08549200) (1/4"-08549230, 08549325, 08569910, 08549326) (1/2"-08549331)
08210014	1-7/16	37	1/0 AWG - 250 kcmil	All	(3/8") 08050300 (1/2") 08050500	All	(1/8"-08549200) (1/4"-08549230, 08549325, 08569910, 08549326) (1/2"-08549331)
08210018	1-7/8	48	350 kcmil - 1,000 kcmil	-	All	All	(1/8"-08549200) (1/4"-08549230, 08549325, 08569910, 08549326) (3/8"-08549333, 08549329) (1/2"-08549331)