

EQUAL  
TEE

MOLDED  
FOR YOUR  
INDUSTRY

IntegriFuse™



 **INTEGRITY**  
Fusion Products, Inc.

REVISED AUGUST 18, 2023

TOLL FREE 1-888-770-6330

INTEGRITYFUSION.COM

# The difference MOLDED

Molded Tees from Integrity Fusion Products are the market leader for butt fusion tees. These fittings offer performance, availability, and value that eliminate the need for fabricated fittings.

The Molded difference includes:

- No inner fusion bead
- Fully pressure rated
- Wall thickness remains consistent throughout

IntegriFuse EF Fittings are manufactured from the highest quality Virgin black high density bimodal polyethylene copolymer resin designed for use in, but not limited to, potable water, natural gas, industrial, landfill, oil & gas, and mining applications.

All IntegriFuse fittings meet ASTM –D2513 & ASTM D3261 (where applicable).

Butt fusion, electrofusion, and transition fittings meet AWWA C-901/C-906, NSF/ANSI/CAN-61, and NSF/ANSI-372 (where applicable). IntegriFuse fittings are manufactured with resin having a material designation code of PE 3408, PE 3608, PE 4710, and PE 100

Integrity Fusion Products, Inc.

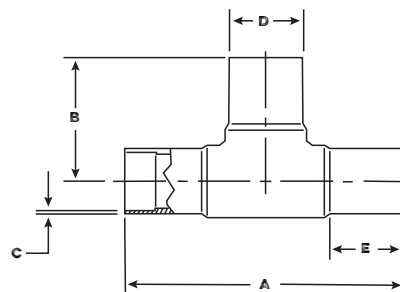
270 Parkade Court

Peachtree City, GA 30269

P: 1-888-770-6330 • P: 770-632-7530

F: 770-632-7540

E: Info@IntegrityFusion.com



**INTEGRITY**  
Fusion Products, Inc.



## IPS-SDR 17 - 125 PSI (Working Pressure at 73.4° F)

Nominal Size	A	B	C	D	E	Weight	Item Code
3" IPS	11.81"	5.91"	0.206"	3.500"	3.54"	1.5 lbs.	100709
4" IPS	13.78"	6.89"	0.264"	4.500"	3.94"	2.8 lbs.	100713
6" IPS	18.11"	9.06"	0.390"	6.625"	4.72"	7.5 lbs.	100717
8" IPS	23.62"	11.81"	0.507"	8.625"	5.71"	17.5 lbs.	100721
10" IPS	27.56"	13.78"	0.632"	10.750"	6.30"	28.3 lbs.	100725
12" IPS	31.57"	15.97"	0.750"	12.750"	7.52"	47.5 lbs.	100727

## IPS-SDR 11 - 200 PSI (Working Pressure at 73.4° F)

Nominal Size	A	B	C	D	E	Weight	Item Code	Notes
¾" IPS	6.38"	3.19"	0.095"	1.050"	2.14"	0.2 lbs.	100700	-
1" IPS	6.62"	3.31"	0.120"	1.315"	2.18"	0.2 lbs.	100701	-
1 ¼" IPS	6.97"	3.48"	0.151"	1.660"	2.15"	0.4 lbs.	100702	-
1 ½" IPS	7.84"	3.92"	0.173"	1.900"	2.37"	0.6 lbs.	100704	-
2" IPS	8.66"	4.33"	0.216"	2.375"	2.48"	1.0 lbs.	100705	FM 200
3" IPS	11.81"	5.91"	0.318"	3.500"	3.54"	1.5 lbs.	100708	FM 200
4" IPS	13.78"	6.89"	0.409"	4.500"	3.94"	3.9 lbs.	100712	FM 200
6" IPS	18.11"	9.06"	0.602"	6.625"	4.72"	10.5 lbs.	100716	FM 200
8" IPS	23.62"	11.81"	0.784"	8.625"	5.71"	23.2 lbs.	100720	FM 200
10" IPS	27.56"	13.78"	0.977"	10.750"	6.30"	39.4 lbs.	100724	FM 200
12" IPS	31.57"	15.97"	1.159"	12.750"	7.52"	66.3 lbs.	100726	FM 200

# The difference MOLDED

Molded Tees from Integrity Fusion Products are the market leader for butt fusion tees. These fittings offer performance, availability, and value that eliminate the need for fabricated fittings.

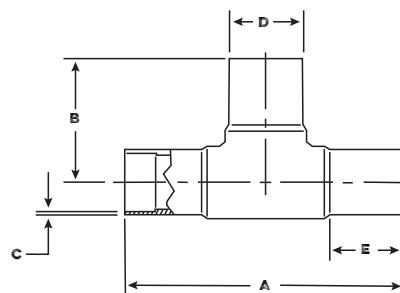
## The Molded difference includes:

- No inner fusion bead
- Fully pressure rated
- Wall thickness remains consistent throughout

IntegriFuse EF Fittings are manufactured from the highest quality Virgin black high density bimodal polyethylene copolymer resin designed for use in, but not limited to, potable water, natural gas, industrial, landfill, oil & gas, and mining applications.

IntegriFuse fittings meet ASTM –D2513 & ASTM D3261 (where applicable). Butt fusion, electrofusion, and transition fittings meet AWWA C-901/C-906, NSF/ANSI/CAN-61, and NSF/ANSI-372 (where applicable). IntegriFuse fittings are manufactured with resin having a material designation code of PE 3408, PE 3608, PE 4710, and PE 100

Integrity Fusion Products, Inc.  
270 Parkade Court  
Peachtree City, GA 30269  
P: 1-888-770-6330 • P: 770-632-7530  
F: 770-632-7540  
E: Info@IntegrityFusion.com



**INTEGRITY**  
Fusion Products, Inc.



## IPS-SDR 9 - 255 PSI (Working Pressure at 73.4° F)

Nominal Size	A	B	C	D	E	Weight	Item Code	Notes
2" IPS	8.66"	4.33"	0.264"	2.375"	2.47"	1.1 lbs.	100707	FM 250
3" IPS	11.81"	5.91"	0.389"	3.500"	3.54"	2.4 lbs.	100711	FM 250
4" IPS	13.78"	6.89"	0.500"	4.500"	3.94"	4.5 lbs.	100715	FM 250
6" IPS	18.11"	9.06"	0.736"	6.625"	4.72"	12.3 lbs.	100719	FM 250
8" IPS	23.62"	11.81"	0.958"	8.625"	5.71"	25.1 lbs.	100723	FM 250
10" IPS	27.56"	13.78"	1.194"	10.75"	6.30"	47.15 lbs.	100736	—
12" IPS	31.57"	15.97"	1.417"	12.75"	7.52"		100737	—

## IPS-SDR 7 - 355 PSI (Working Pressure at 73.4° F)

Nominal Size	A	B	C	D	E	Weight	Item Code	Notes
2" IPS	8.66"	4.33"	0.339"	2.375"	2.47"	1.0 lbs.	100706	FM 250
3" IPS	11.81"	5.91"	0.500"	3.500"	3.54"	2.9 lbs.	100710	FM 250
4" IPS	13.78"	6.89"	0.643"	4.500"	3.94"	5.5 lbs.	100714	FM 250
6" IPS	18.11"	9.06"	0.946"	6.625"	4.72"	14.7 lbs.	100718	FM 250
8" IPS	23.62"	11.81"	1.232"	8.625"	5.71"	32.1 lbs.	100722	FM 250
10" IPS	27.56"	13.78"	1.536"	10.75"	6.30"	58.9 lbs.	100735	—
12" IPS	31.57"	15.97"	1.821"	12.75"	7.52"		100734	—

## DIPS-SDR 11 - 200 PSI (Working Pressure at 73.4° F)

Nominal Size	A	B	C	D	E	Weight	Item Code	Notes
4" DIPS	15.63"	7.82"	0.436"	4.800"	4.10"	4.8 lbs.	100728	FM 200
6" DIPS	19.34"	9.67"	0.627"	6.900"	5.10"	11.6 lbs.	100729	FM 200
8" DIPS	23.15"	11.58"	0.823"	9.050"	5.20"	24.7 lbs.	100730	FM 200
10" DIPS	24.60"	12.20"	1.200"	11.100"	5.11"	39.0 lbs.	100731	FM 200
12" DIPS	28.45"	14.17"	1.27"	13.25"	6.0"	70.70 lbs.	100732	FM 200