

FLANGE
ADAPTERS

MOLDED
FOR YOUR
INDUSTRY

IntegriFuse™



 **INTEGRITY**
Fusion Products, Inc.

TOLL FREE 1-888-770-6330

INTEGRITYFUSION.COM

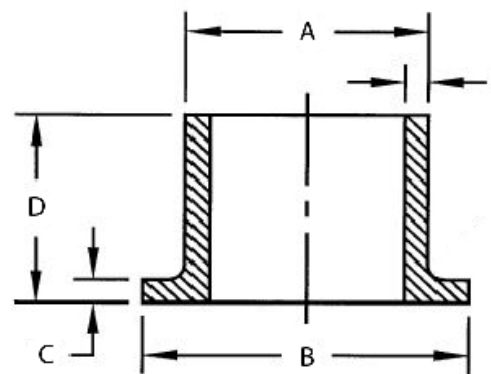
The difference MOLDED Makes

Molded Flange Adapters from Integrity Fusion Products have quickly become a market leader. By injection molding our flange adapters, we offer a high quality and consistent product every time. The self sealing design on the hub face eliminates the need for a gasket for most applications. Integrity Fusion ensures our Flanges meet ASTM F2880 by conducting 100% X-Ray inspection as an important part of our Quality Control program.

IntegriFuse Fittings are manufactured from the highest quality black high density bimodal polyethylene copolymer designed for use in, but not limited to, potable water, natural gas, industrial, landfill, oil & gas, and mining applications.

All IntegriFuse fittings meet ASTM –D2513 & ASTM D3261 (where applicable).
FM Approved.

Integrity Fusion Products, Inc.
270 Parkade Court
Peachtree City, GA 30269
P: 1-888-770-6330 • P: 770-632-7530
F: 770-632-7540
E: Info@IntegrityFusion.com



SDR 17 - (Standard Dimension Ratio) 125 PSI (Working Pressure at 73.4° F)

Nominal Size	A (OD)	B	C	D (length)	E (wall)	Weight	Item Code
2" IPS	2.375"	3.94"	0.40"	5.71"	0.140"	0.30 lbs.	100401
3" IPS	3.500"	5.00"	0.42"	5.82"	0.206"	0.55 lbs.	100405
4" IPS	4.500"	6.00"	0.54"	6.54"	0.265"	1.10 lbs.	100409
6" IPS	6.625"	8.50"	0.80"	8.00"	0.390"	2.75 lbs.	100413
8" IPS	8.625"	10.63"	1.02"	9.02"	0.507"	5.50 lbs.	100417
10" IPS	10.750"	12.75"	1.29"	10.01"	0.632"	9.10 lbs.	100421
12" IPS	12.750"	15.00"	1.55"	10.75"	0.750"	13.55 lbs.	100424
14" IPS	14.000"	17.50"	1.62"	12.00"	0.824"	20.00 lbs.	100427
16" IPS	16.000"	20.00"	1.85"	12.00"	0.941"	26.00 lbs.	100429
18" IPS	18.000"	21.12"	2.08"	12.00"	1.059"	30.00 lbs.	100431
20" IPS	20.000"	23.50"	2.31"	12.00"	1.176"	38.00 lbs.	100433
24" IPS	24.000"	28.00"	2.77"	14.00"	1.412"	66.00 lbs.	100437
28" IPS	28.000"	32.30"	3.23"	14.00"	1.647"	88.00 lbs.	100439
30" IPS	30.000"	34.30"	3.46"	14.00"	1.765"	101.00 lbs.	100441
32" IPS	32.000"	34.30"	3.69"	14.00"	1.882"	118.00 lbs.	100443
36" IPS	36.000"	40.80"	4.16"	14.00"	2.118"	148.00 lbs.	100445

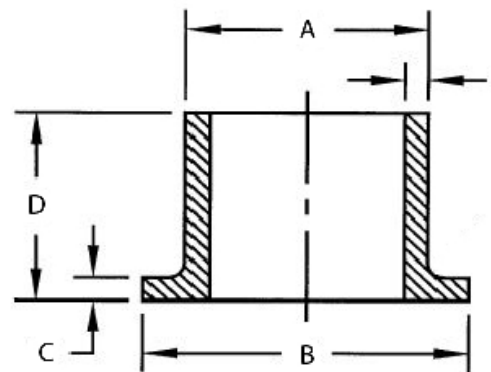


The difference MOLDED Makes

Molded Flange Adapters from Integrity Fusion Products have quickly become a market leader. By injection molding our flange adapters, we offer a high quality and consistent product every time. The self sealing design on the hub face eliminates the need for a gasket for most applications. Integrity Fusion ensures our Flanges meet ASTM F2880 by conducting 100% X-Ray inspection as an important part of our Quality Control program.

IntegriFuse Fittings are manufactured from the highest quality black high density bimodal polyethylene copolymer designed for use in, but not limited to, potable water, natural gas, industrial, landfill, oil & gas, and mining applications.

All IntegriFuse fittings meet ASTM –D2513 & ASTM D3261 (where applicable).
FM Approved.



SDR 11 - (Standard Dimension Ratio) 200 PSI (Working Pressure at 73.4° F)

Nominal Size	A	B	C	D	E	Weight	Item Code	Notes
2" IPS	2.375"	3.94"	0.40"	5.71"	0.216"	0.50 lbs.	100400	FM 200
3" IPS	3.500"	5.00"	0.42"	5.82"	0.318"	.55 lbs.	100404	FM 200
4" IPS	4.500"	6.00"	0.54"	6.54"	0.409"	1.50 lbs.	100408	FM 200
6" IPS	6.625"	8.50"	0.80"	8.00"	0.602"	3.95 lbs.	100412	FM 200
8" IPS	8.625"	10.63"	1.02"	9.02"	0.784"	7.40 lbs.	100416	FM 200
10" IPS	10.750"	12.75"	1.29"	10.01"	0.977"	12.80 lbs.	100420	FM 200
12" IPS	12.750"	15.00"	1.55"	10.75"	1.159"	19.60 lbs.	100423	FM 200
14" IPS	14.000"	17.50"	1.62"	12.00"	1.273"	27.00 lbs.	100426	-
16" IPS	16.000"	20.00"	1.85"	12.00"	1.455"	36.00 lbs.	100428	-
18" IPS	18.000"	21.12"	2.08"	12.00"	1.636"	42.00 lbs.	100430	-
20" IPS	20.000"	23.50"	2.31"	12.00"	1.818"	54.00 lbs.	100432	-
24" IPS	24.000"	28.00"	2.77"	14.00"	2.182"	91.00 lbs.	100436	-
28" IPS	28.000"	32.30"	3.23"	14.00"	2.545"	123.00 lbs.	100438	-
30" IPS	30.000"	34.30"	3.46"	14.00"	2.727"	140.00 lbs.	100440	-
32" IPS	32.000"	34.30"	3.69"	14.00"	2.909"	160.00 lbs.	100442	-
36" IPS	36.000"	40.80"	4.16"	14.00"	3.273"	205.00 lbs.	100444	-

Integrity Fusion Products, Inc.
270 Parkade Court
Peachtree City, GA 30269
P: 1-888-770-6330 • P: 770-632-7530
F: 770-632-7540
E: Info@IntegrityFusion.com



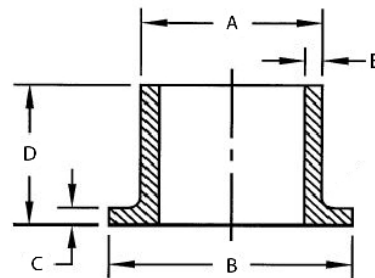
The difference MOLDED Makes

Molded Flange Adapters from Integrity Fusion Products have quickly become a market leader. By injection molding our flange adapters, we offer a high quality and consistent product every time. The self sealing design on the hub face eliminates the need for a gasket for most applications. Integrity Fusion ensures our Flanges meet ASTM F2880 by conducting 100% X-Ray inspection as an important part of our Quality Control program.

IntegriFuse Fittings are manufactured from the highest quality black high density bimodal polyethylene copolymer designed for use in, but not limited to, potable water, natural gas, industrial, landfill, oil & gas, and mining applications.

All IntegriFuse fittings meet ASTM -D2513 & ASTM D3261 (where applicable).
FM Approved.

Integrity Fusion Products, Inc.
270 Parkade Court
Peachtree City, GA 30269
P: 1-888-770-6330 • P: 770-632-7530
F: 770-632-7540
E: Info@IntegrityFusion.com



SDR 9 - (Standard Dimension Ratio) 255 PSI (Working Pressure at 73.4° F)

Nominal Size	A (OD)	B	C	D (length)	E (wall)	Weight	Item Code	Notes
2" IPS	2.375"	3.94"	0.55"	6.10"	0.264"	0.50 lbs.	100403	FM 250
3" IPS	3.500"	5.00"	0.67"	6.10"	0.389"	1.15 lbs.	100407	FM 250
4" IPS	4.500"	6.61"	0.79"	6.10"	0.500"	2.05 lbs.	100411	FM 250
6" IPS	6.625"	8.50"	1.02"	8.07"	0.736"	tbd lbs.	100415	FM 250
8" IPS	8.625"	10.63"	1.02"	10.67"	0.958"	tbd lbs.	100419	FM 250
10" IPS	10.750"	12.99"	1.18"	11.50"	1.194"	tbd lbs.	Coming Soon	
12" IPS	12.750"	15.75"	1.38"	10.83"	1.417"	tbd lbs.	Coming Soon	

SDR 7 - (Standard Dimension Ratio) 335 PSI (Working Pressure at 73.4° F)

Nominal Size	A (OD)	B	C	D (length)	E (wall)	Weight	Item Code	Notes
2" IPS	2.375"	3.94"	0.55"	6.10"	0.339"	0.65 lbs.	100402	FM 335
3" IPS	3.500"	5.00"	0.67"	6.10"	0.500"	1.30 lbs.	100406	FM 335
4" IPS	4.500"	6.61"	0.79"	6.10"	0.643"	2.25 lbs.	100410	FM 335
6" IPS	6.625"	8.50"	1.02"	8.07"	0.946"	5.95 lbs.	100414	FM 335
8" IPS	8.625"	10.63"	1.63"	18.68"	1.232"	11 lbs.	100418	FM 335

SDR 11 - (Standard Dimension Ratio) 200 PSI (Working Pressure at 73.4° F)

Nominal Size	A (OD)	B	C	D (length)	E (wall)	Weight	Item Code	Notes
4" DIPS	4.800"	6.56"	0.68"	6.00"	0.436"	1.65 lbs.	100446	FM 200
6" DIPS	6.900"	8.60"	1.00"	8.00"	0.627"	4.35 lbs.	100447	FM 200
8" DIPS	9.050"	10.72"	1.25"	9.00"	0.823"	8.00 lbs.	100448	FM 200
10" DIPS	11.100"	12.15"	1.35"	9.00"	1.009"	12.20 lbs.	100449	FM 200
12" DIPS	13.200"	15.94"	1.81"	10.78"	1.200"	20.075 lbs.	100450	FM 200

