

REDUCERS

MOLDED
FOR YOUR
INDUSTRY

IntegriFuse™



INTEGRITY
Fusion Products, Inc.

TOLL FREE 1-888-770-6330

INTEGRITYFUSION.COM

The difference MOLDED Makes

Molded Backup Rings from Integrity Fusion Products are the new market leader for butt fusion Tees. These fittings offer performance, availability, and value that eliminate the need for fabricated fittings.

The molded difference includes:

- No inner fusion beads
- Fully Pressure Rated
- Wall thickness remains consistent throughout

IntegriFuse fittings are manufactured from 100% Virgin Resin with black high density bimodal polyethylene copolymer designed for use in, but not limited to, potable water, natural gas, industrial, landfill, oil & gas, and mining applications.

All IntegriFuse fittings meet ASTM-D2513 & ASTM-D3261 requirements.

Ductile Iron Rings:

- Fusion Bonded Epoxy Coated Ductile Iron
- ASTM A536 Materials Standard
- Made according to ANSI B16.5 Class 150
- FM Approved

Integrity Fusion Products, Inc.

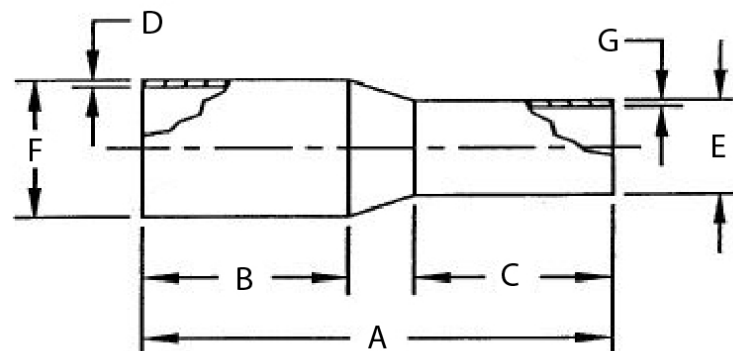
270 Parkade Court

Peachtree City, GA 30269

P: 1-888-770-6330 • P: 770-632-7530

F: 770-632-7540

E: Info@IntegrityFusion.com



IPS

SDR 17 - (Standard Dimension Ratio) 125 PSI (Working Pressure at 73.4° F)

Nominal Size	A	B	C	D (wall)	E (OD)	F (OD)	G (wall)	Weight	Item Code
3" x 2" IPS	7.87"	3.94"	2.95"	0.206"	2.375"	3.500"	0.140"	0.45 lbs.	100608
4" x 2" IPS	9.06"	4.33"	2.95"	0.264"	2.375"	4.500"	0.140"	0.80 lbs.	100612
4" x 3" IPS	9.06"	4.33"	3.94"	0.264"	3.500"	4.500"	0.206"	1.05 lbs.	100616
6" x 3" IPS	11.03"	5.06"	3.71"	0.390"	3.500"	6.625"	0.206"	2.05 lbs.	100620
6" x 4" IPS	11.42"	5.12"	4.33"	0.390"	4.500"	6.625"	0.264"	2.55 lbs.	100622
8" x 4" IPS	12.80"	5.99"	4.05"	0.507"	4.500"	8.625"	0.264"	4.40 lbs.	100626
8" x 6" IPS	12.80"	6.10"	5.12"	0.507"	6.625"	8.625"	0.390"	5.05 lbs.	100628
10" x 6" IPS	14.06"	6.16"	5.29"	0.632"	6.625"	10.750"	0.390"	7.55 lbs.	100632
10" x 8" IPS	14.37"	6.25"	5.81"	0.632"	8.625"	10.750"	0.507"	9.15 lbs.	100634
12" x 6" IPS	16.00"	6.95"	5.22"	0.750"	6.625"	12.750"	0.390"	11.75 lbs.	100636
12" x 8" IPS	16.54"	7.09"	6.10"	0.750"	8.625"	12.750"	0.507"	13.45 lbs.	100638
12" x 10" IPS	16.54"	7.09"	6.69"	0.750"	10.750"	12.750"	0.632"	14.05 lbs.	100640

The difference MOLDED Makes

Molded Equal Tees from Integrity Fusion Products are the new market leader for butt fusion Tees. These fittings offer performance, availability, and value that eliminate the need for fabricated fittings.

The molded difference includes:

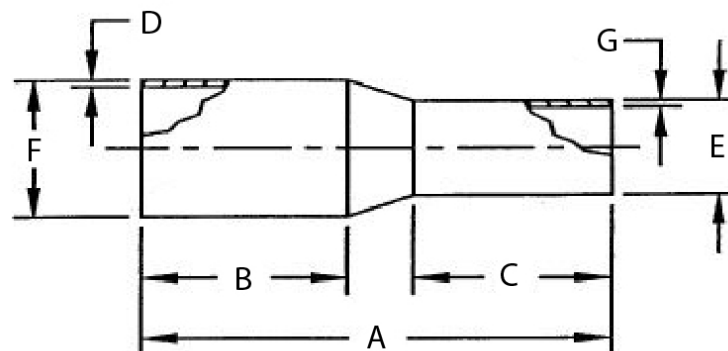
- No inner fusion beads
- Fully Pressure Rated
- Wall thickness remains consistent throughout

IntegriFuse fittings are manufactured from 100% Virgin Resin with black high density bimodal polyethylene copolymer designed for use in, but not limited to, potable water, natural gas, industrial, landfill, oil & gas, and mining applications.

All IntegriFuse fittings meet ASTM-D2513 & ASTM-D3261 requirements.

All butt fusion, electrofusion, and transition fittings meet AWWA C-901/C-906, NSF-61, and NSF-372. IntegriFuse fittings are manufactured with resin having a material designation code of PE 3408, PE3608, PE 4710, and PE 100.

Integrity Fusion Products, Inc.
270 Parkade Court
Peachtree City, GA 30269
P: 1-888-770-6330 • P: 770-632-7530
F: 770-632-7540
E: Info@IntegrityFusion.com



IPS

SDR 11 - (Standard Dimension Ratio) 200 PSI (Working Pressure at 73.4° F)

Nominal Size	A	B	C	D (wall)	E (OD)	F (OD)	G (wall)	Weight	Item Code	Notes
1" x ¾" IPS	4.58"	2.17"	2.17"	0.120"	1.050"	1.315"	0.095"	0.05 lbs.	100600	-
1 ¼" x 1" IPS	4.66"	2.20"	2.15"	0.151"	1.315"	1.660"	0.120"	0.10 lbs.	100601	-
1 ½" x 1" IPS	5.12"	2.44"	2.16"	0.173"	1.315"	1.900"	0.120"	0.15 lbs.	100602	-
1 ½" x 1 ¼" IPS	4.83"	2.44"	2.17"	0.173"	1.660"	1.900"	0.151"	0.15 lbs.	100603	-
2" x 1" IPS	5.62"	2.53"	2.13"	0.216"	1.315"	2.375"	0.120"	0.20 lbs.	100604	-
2" x 1 ¼" IPS	5.34"	2.53"	2.15"	0.216"	1.660"	2.375"	0.151"	0.20 lbs.	100605	-
2" x 1 ½" IPS	5.40"	2.53"	2.42"	0.216"	1.900"	2.375"	0.173"	0.25 lbs.	100606	-
3" x 2" IPS	7.87"	3.94"	2.95"	0.318"	2.375"	3.500"	0.216"	0.50 lbs.	100607	FM 200
4" x 2" IPS	9.06"	4.33"	2.95"	0.409"	2.375"	4.500"	0.216"	1.25 lbs.	100611	FM 200
4" x 3" IPS	9.06"	4.33"	3.94"	0.409"	3.500"	4.500"	0.318"	1.15 lbs.	100615	FM 200
6" x 3" IPS	11.03"	5.06"	3.71"	0.602"	3.500"	6.625"	0.318"	3.15 lbs.	100619	FM 200
6" x 4" IPS	11.42"	5.12"	4.33"	0.602"	4.500"	6.625"	0.409"	3.75 lbs.	100621	FM 200
8" x 4" IPS	12.80"	5.99"	4.05"	0.784"	4.500"	8.625"	0.409"	6.70 lbs.	100625	FM 200
8" x 6" IPS	12.80"	6.10"	5.12"	0.784"	6.625"	8.625"	0.602"	7.70 lbs.	100627	FM 200
10" x 6" IPS	14.06"	6.16"	5.29"	0.977"	6.625"	10.750"	0.602"	11.55 lbs.	100631	FM 200
10" x 8" IPS	14.37"	6.25"	5.88"	0.977"	8.625"	10.750"	0.784"	13.40 lbs.	100633	FM 200
12" x 6" IPS	16.00"	6.95"	5.22"	1.159"	6.625"	12.750"	0.602"	17.15 lbs.	100635	FM 200
12" x 8" IPS	16.54"	7.09"	6.10"	1.159"	8.625"	12.750"	0.784"	19.41 lbs.	100637	FM 200
12" x 10" IPS	16.54"	7.09"	6.69"	1.159"	10.750"	12.750"	0.977"	21.30 lbs.	100639	FM 200



The difference MOLDED Makes

Molded Backup Rings from Integrity Fusion Products are the new market leader for butt fusion Tees. These fittings offer performance, availability, and value that eliminate the need for fabricated fittings.

The molded difference includes:

- No inner fusion beads
- Fully Pressure Rated
- Wall thickness remains consistent throughout

IntegriFuse fittings are manufactured from 100% Virgin Resin with black high density bimodal polyethylene copolymer designed for use in, but not limited to, potable water, natural gas, industrial, landfill, oil & gas, and mining applications.

All IntegriFuse fittings meet ASTM-D2513 & ASTM-D3261 requirements.

Ductile Iron Rings:

- Fusion Bonded Epoxy Coated Ductile Iron
- ASTM A536 Materials Standard
- Made according to ANSI B16.5 Class 150
- FM Approved

Integrity Fusion Products, Inc.

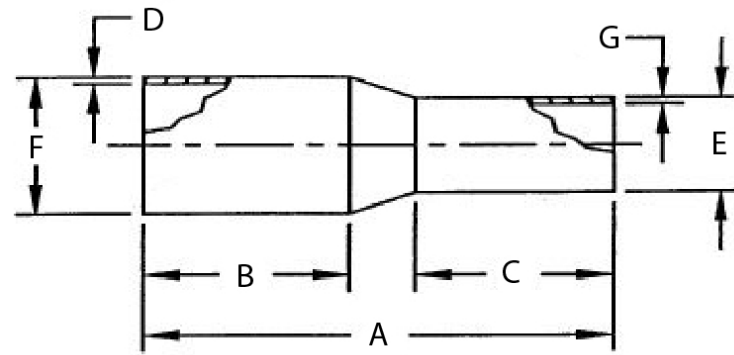
270 Parkade Court

Peachtree City, GA 30269

P: 1-888-770-6330 • P: 770-632-7530

F: 770-632-7540

E: Info@IntegrityFusion.com



IPS

SDR 9 - (Standard Dimension Ratio) 255 PSI (Working Pressure at 73.4° F)

Nominal Size	A	B	C	D (wall)	E (OD)	F (OD)	G (wall)	Weight	Item Code	Notes
3" x 2" IPS	7.87"	3.94"	2.95"	0.389"	2.375"	3.500"	0.264"	0.75 lbs.	100610	FM 250
4" x 2" IPS	9.06"	4.33"	2.95"	0.500"	2.375"	4.500"	0.264"	1.40 lbs.	100614	FM 250
4" x 3" IPS	9.06"	4.33"	3.94"	0.500"	3.500"	4.500"	0.389"	1.45 lbs.	100618	FM 250
6" x 4" IPS	11.42"	5.12"	4.33"	0.736"	4.500"	6.625"	0.500"	3.80 lbs.	100624	FM 250
8" x 6" IPS	12.80"	6.10"	5.12"	0.958"	6.625"	8.625"	0.736"	8.80 lbs.	100630	FM 250

IPS

SDR 7 - (Standard Dimension Ratio) 335 PSI (Working Pressure at 73.4° F)

Nominal Size	A	B	C	D (wall)	E (OD)	F (OD)	G (wall)	Weight	Item Code	Notes
3" x 2" IPS	7.87"	3.94"	2.95"	0.500"	2.375"	3.500"	0.339"	1.00 lbs.	100609	FM 335
4" x 2" IPS	9.06"	4.33"	2.95"	0.643"	2.375"	4.500"	0.339"	1.75 lbs.	100613	FM 335
4" x 3" IPS	9.06"	4.33"	3.94"	0.643"	3.500"	4.500"	0.500"	2.10 lbs.	100617	FM 335
6" x 4" IPS	11.42"	5.12"	4.33"	0.946"	4.500"	6.625"	0.643"	5.20 lbs.	100623	FM 335
8" x 6" IPS	12.80"	6.10"	5.12"	1.232"	6.625"	8.625"	0.946"	10.65 lbs.	100629	FM 335



The difference MOLDED Makes

Molded Backup Rings from Integrity Fusion Products are the new market leader for butt fusion Tees. These fittings offer performance, availability, and value that eliminate the need for fabricated fittings.

The molded difference includes:

- No inner fusion beads
- Fully Pressure Rated
- Wall thickness remains consistent throughout

IntegriFuse fittings are manufactured from 100% Virgin Resin with black high density bimodal polyethylene copolymer designed for use in, but not limited to, potable water, natural gas, industrial, landfill, oil & gas, and mining applications.

All IntegriFuse fittings meet ASTM-D2513 & ASTM-D3261 requirements.

Ductile Iron Rings:

- Fusion Bonded Epoxy Coated Ductile Iron
- ASTM A536 Materials Standard
- Made according to ANSI B16.5 Class 150
- FM Approved

Integrity Fusion Products, Inc.

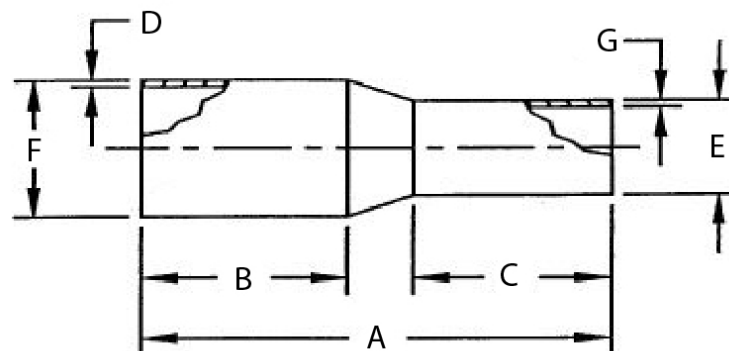
270 Parkade Court

Peachtree City, GA 30269

P: 1-888-770-6330 • P: 770-632-7530

F: 770-632-7540

E: Info@IntegrityFusion.com



DIPS

SDR 11 - (Standard Dimension Ratio) 200 PSI (Working Pressure at 73.4° F)

Nominal Size	A	B	C	D (wall)	E (OD)	F (OD)	G (wall)	Weight	Item Code	Notes
6" x 4" DIPS	11.41"	5.10"	4.33"	0.627"	4.8"	6.900"	0.436"	4.10 lbs.	100641	FM 200
8" x 6" DIPS	12.79"	6.10"	5.12"	0.823"	6.9"	9.050"	0.627"	7.80 lbs.	100642	FM 200
10" x 6" DIPS	14.06"	6.16"	5.29"	1.01"	6.9"	11.1"	0.627"	0.00 lbs.	100643	-
10" x 8" DIPS	14.37"	6.25"	5.88"	1.01"	9.05"	11.1"	0.823"	0.00 lbs.	100647	-
12" x 6" DIPS	16"	6.95"	5.22"	1.2"	6.9"	13.2"	0.627"	0.00 lbs.	100651	-
12" x 8" DIPS	16.54"	7.09"	6.1"	1.2"	9.05"	13.2"	0.823"	0.00 lbs.	100655	-

DIPS

SDR 9 - (Standard Dimension Ratio) 200 PSI (Working Pressure at 73.4° F)

Nominal Size	A	B	C	D (wall)	E (OD)	F (OD)	G (wall)	Weight	Item Code	Notes
10" x 6" DIPS	14.06"	6.16"	5.29"	1.01"	6.9"	11.1"	0.627"	0.00 lbs.	100644	-
10" x 8" DIPS	14.37"	6.25"	5.88"	1.01"	9.05"	11.1"	0.823"	0.00 lbs.	100648	-
12" x 6" DIPS	16"	6.95"	5.22"	1.2"	6.9"	13.2"	0.627"	0.00 lbs.	100652	-
12" x 8" DIPS	16.54"	7.09"	6.1"	1.2"	9.05"	13.2"	0.823"	0.00 lbs.	100656	-

