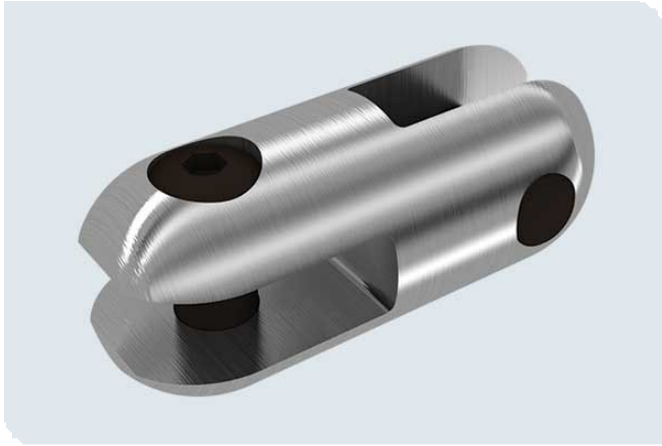


90° CONNECTORS



KEY FEATURES

- ✓ Fitted with high strength pins and smooth rollers
- ✓ No fraying or damage to the rope
- ✓ Fitted with high strength hex pins

Use to connect rope, swivels and other objects. With high strength pins and smooth rollers you can safely connect rope without fear of fraying or damage. Use the convenient 90° connectors to link wire and other non-rope items. Connectors have high strength hex pins.

Safe working load (kg)	Safe working load (lb)	A (mm)	A (in)	B (mm)	B (in)	C (mm)	C (in)	D (mm)	D (in)	Weight (kg)	Weight (lb)	Slingco Part No.
1134	2,500	22	0.875	9.6	0.375	8	0.313	54	2.175	0.08	0.17	ZSW6554
2240	5,000	31.8	1.25	13.5	0.53	10	0.406	73	2.875	0.21	0.46	ZSW6555
4030	9,000	38.1	1.5	15	0.594	12.5	0.5	86	3.375	0.33	0.73	ZSW6556
6800	15,000	50.8	2	20	0.781	18	0.688	116	4.563	0.91	2.00	ZSW6557

This information is for marketing purposes only. The details contained herein is presented as general information and no representation or warranty is expressly or impliedly given as to its accuracy, completeness or correctness. It does not constitute part of a legal offer or contract. For technical specifications, please contact Slingco America, Inc.

Dimensions

The figures shown are indicative only. Fully dimensioned data-sheets are available on request. Nominal figures/actuals are as per data-sheet with tolerances of +/-5%. Please contact us if you have any questions.

Range dimension overlaps If the cable, rope or hose you have lies where ranges overlap, e.g. 1" when sizing is 0.5-1.00 and 1.00-1.5 we recommend that you select your cable grip to achieve break load first. If tensile strengths are equal or both adequate, choose the smaller of the two. Please contact us if you have any questions.



GET IN TOUCH

- ☎ 1 888 685 9478
- ✉ sales@slingcoamerica.com