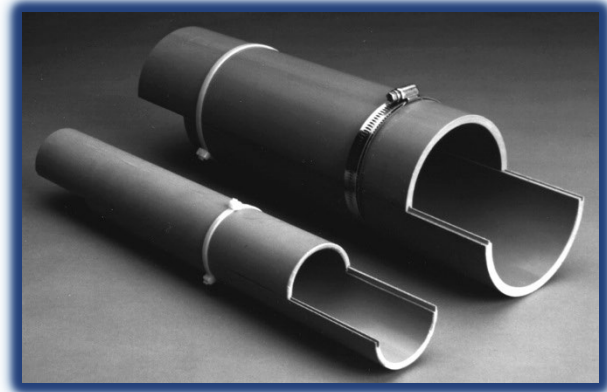
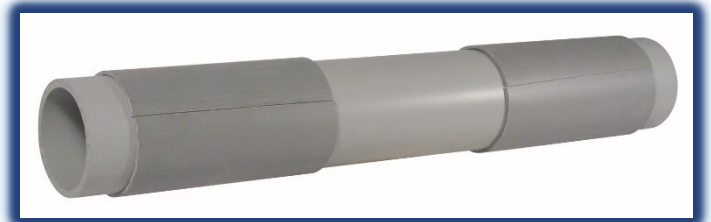


SPLIT DUCT, SPLIT KITS, AND ACCESSORIES



Split Duct



Split Kits



Accessories



Split Duct & Accessories

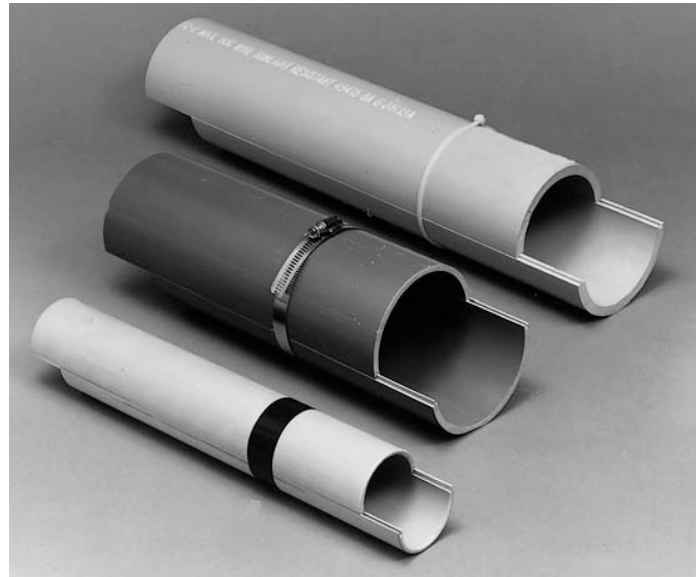
Prime Conduit Split Duct is the fast and easy way to repair broken ductwork without the costly cutting and resplicing of your conductors.

Our unique tongue-and-groove design leads the industry in providing a strong, rigid solution for duct repair situations.

The interlocking design allows the split duct sections to be staggered and butted together. Joints may be sealed with tape and reinforced with plastic or metallic straps to produce a rigid, stable unit.

Manufactured from a compound designed specifically for power and telecommunications applications, Prime Conduit Split Duct exhibits superior impact strength.

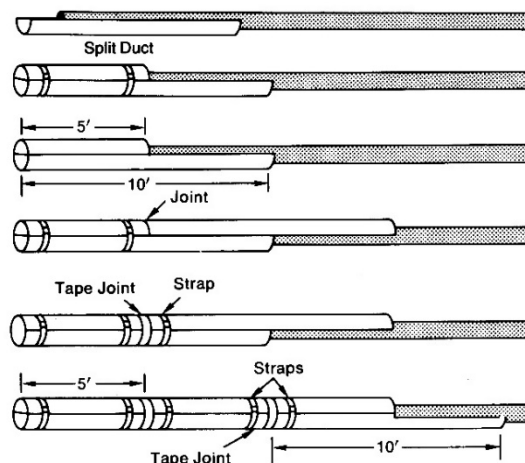
Available in 2" through 6" diameters, this product line also contains couplings and sweeps necessary to complete the system.



The fast and easy method of installing duct around existing cable for repair and temporary installations.

Recommended Installation Procedure

1. Place one 10-foot Split Duct section under cable.
2. In order to stagger joints, saw another section in half (about 5 feet long).
3. Place 5-foot section over cable and snap the two sections together.
4. Place strap about one foot from the end and another strap about a foot from the joint where the ends of the top sections will butt.
5. Place another 10-foot Split Duct section over the open half of the bottom section, butt the ends tightly together and snap the sections together.
6. Place a length of tape around both sections of the Split Duct to cover the butted joint.
7. Place a strap about one foot beyond the taped joint.
8. Lay another length of Split Duct underneath cable, butt together, tape the butted joint and strap one foot on each side of the joint.
9. Repeat procedure. (if necessary)
10. Use standard couplings, split couplings, or coupling stock, to join the split duct or split duct sweeps to any remaining/existing conduit or sweeps.



Split Duct & Accessories



Split Duct

Price Code: U1

Part Number	Size	Type	UPC Number	Crate Qty. (ft.)	Apprx. Crate Wt. (lbs.)	OD (avg.)
49011SD-010	2"	Schedule 40	670648011470	700	561	2.375
49012SD-010	2-1/2"	Schedule 40	670648135770	460	562	2.875
49013SD-010	3"	Schedule 40	670648011487	500	830	3.500
49014SD-010	3-1/2"	Schedule 40	670648036503	290	560	4.000
49015SD-010	4"	Schedule 40	670648011494	290	680	4.500
49016SD-010	5"	Schedule 40	670648011500	230	718	5.563
49017SD-010	6"	Schedule 40	670648011517	130	523	6.625
49411SD-010	2"	Schedule 80	670648211283	700	702	2.375
49415SD-010	4"	Schedule 80	670648011456	290	890	4.500
49416SD-010	5"	Schedule 80	670648002584	380	1,625	5.563
68515SD-010	4"	Telephone Type C	670648011333	320	624	4.350

Schedule 40 & 80 Split Sleeve Couplings No Center Stop



CPSPLT1S – split 1 side
CPSPLT2S – split 2 sides

Price Code: U2

Part Number	Size	UPC Number	Carton Quantity	Diameter x Length	Std. Ctn. Wt. (lbs.)
CPSPLT1S200X600	2"	670648000351	25	2" X 6"	4
CPSPLT1S250X700	2-1/2"	670648000368	25	2-1/2" X 7"	21
CPSPLT1S300X700	3"	670648000375	25	3" X 7"	19
CPSPLT1S350X800	3-1/2"	670648000511	25	3-1/2" X 8"	40
CPSPLT1S400X800	4"	670648000399	15	4" X 8"	13
CPSPLT1S500X400	5"	670648000443	30	5" X 4"	22
CPSPLT1S500X800	5"	670648000450	15	5" X 8"	22
CPSPLT1S500X900	5"	670648000467	8	5" X 9"	14
CPSPLT1S600X1000	6"	670648000474	4	6" X 10"	9
CPSPLT2S300X650	3"	670648000481	25	3" X 6-1/2"	11
CPSPLT2S400X600	4"	670648000993	25	4" X 6"	18

Split Sleeve Couplings – For joining Split Duct to existing Duct

Telephone C Duct Split Sleeve Couplings White No Center Stop

WTD – white telephone duct

Price Code: EC

Part Number	Size	No. Splits	UPC Number	Carton Quantity	Diameter x Length	Std. Ctn. Wt. (lbs.)
CPSPLTTD400X600	4"	1	670648006070	25	4" x 6"	19
CPSPLT2STD400X1800	4"	2	670648006063	6	4" x 18"	16
CPSPLTWTD400X600	4"	1	670648006100	25	4" x 6"	19
CPSPLTWTD400X800	4"	1	670648006117	15	4" x 8"	22

Split Duct

Split Sleeve Sweeps



Price Group: U1

Two 45° elbows may be segmented for 90°.

Part Number	Angle	Radius	Nom. Size	UPC Number	Carton Quantity	Std. Ctn. Wt. (lbs.)
UA9DJSD	90°	24"	2"	670648967388	1	2.9
UA9FJSD	90°	36"	2"	670648010107	1	4.2
UA9FNSD	90°	36"	4"	670648967395	1	13.3
UA7DJSD	45°	24"	2"	670648339222	1	1.4
UA7FJSD	45°	36"	2"	670648002553	1	2.1
UA7FLSD	45°	36"	3"	670648339321	1	4.7
UA7HJSD	45°	48"	2"	670648339345	1	2.7
UA7HLSLSD	45°	48"	3"	670648339352	1	6.1
UA7IJSD	45°	60"	2"	670648339390	1	3.2
UA7ILSD	45°	60"	3"	670648339413	1	7.2
UA7INSLSD	45°	60"	4"	670648339437	1	10.2
UA7HRSD	45°	48"	6"	670648155822	1	20.1
UA6INSLSD	30°	60"	4"	670648967371	1	8.4
UA5INSLSD	22½°	60"	4"	670648338560	1	6.1
UA5HRSD	22½°	48"	6"	670648155839	1	11.4
UA3IJSD	11¼°	60"	2"	670648337969	1	1
UA3ILSD	11¼°	60"	3"	670648337976	1	3.6
UA3INSLSD	11¼°	60"	4"	670648337983	1	5.1
UA3HRSD	11¼°	48"	6"	670648155846	1	7.9

Prime Conduit Schedule 40 Split Sleeve Sweeps Part Number Legend

Position:	Type	Angle	Radius	Nominal Diameter	Split Duct
Example:	UA	9	F	N	SD
Description:	Sch. 40	90°	36"	3"	Split Duct
		9 = 90° 7 = 45° 6 = 30° 5 = 22 ½° 3 = 11 ¼°	D = 24" F = 36" H = 48" I = 60"	J = 2" L = 3" N = 4" R = 6"	SD=Split Duct (Split Sleeves)

Split Kits

Prime Conduit Split Kits are specifically designed to make *Schedule 40 conduit* and *Type C Telephone Duct* repairs faster and easier! Damaged conduit can be repaired without disturbing the installed wire/cable system. Prime Conduit Split Kits come in handy 2 feet lengths with 7 inch split couplings on each end. UV-resistant for outdoor use, Split Kits feature the same durable tongue-and-groove design as Prime Conduit's Split Duct product.

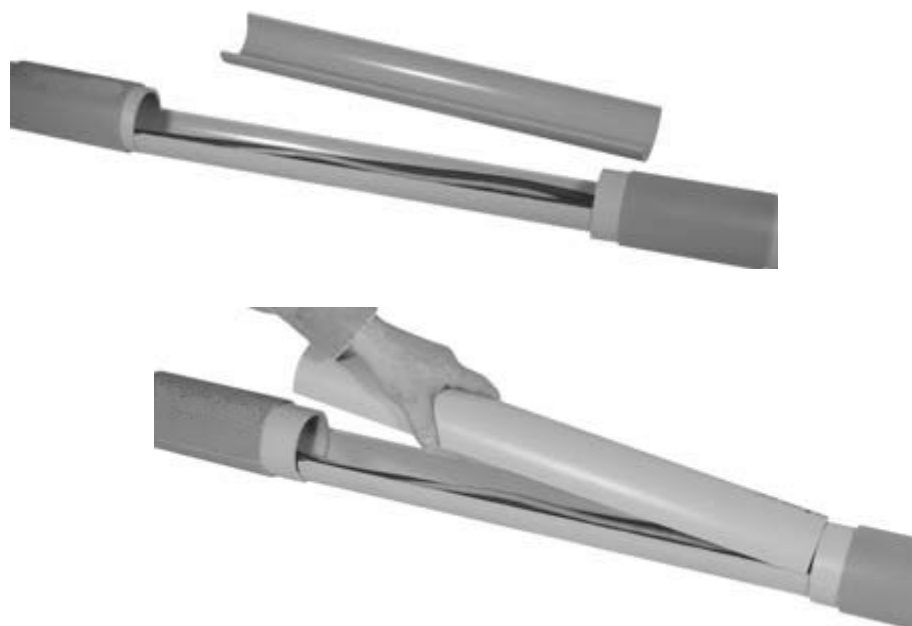
Split Kits are manufactured from extra rugged PVC material. The unique design maintains the same physical performance and dimensional characteristics as the PVC pipe it is repairing! No other repair product can make this offer! The reason is in the interlocking/ tongue-and-groove design that holds the true dimensions of the product, both I.D. and O.D., while maintaining the pipe's physical performance characteristics too.

Prime Conduit® Split Kits... Conduit Repairs made Faster and Easier.



Features:

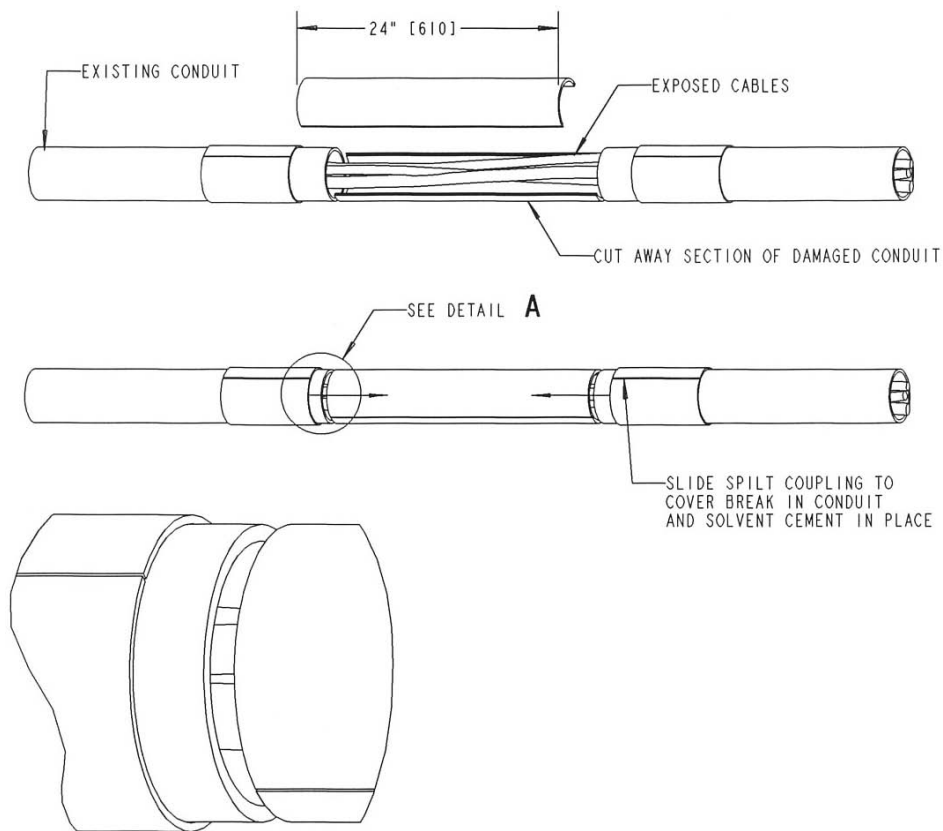
- Interlocking/tongue-and-groove design to assure dimensional pipe characteristics.
- Convenient and handy for easy handling, transport and storage.
- 2 ft lengths for fast/easy conduit repairs. Eliminates the need of cutting standard 10ft. lengths to size. Get off the jobsite FASTER!
- Two 7" split couplings for a secure fit. Allows the product to be coupled together for longer repairs. Solvent cementable = water resistant.
- Available in two wall types – Schedule 40 (Sizes 2"through 6") and Type C (4")
- Manufactured from extra rugged PVC – Lightweight, solvent cementable and compatible with all standard pipe fittings.



Split Kits

Price Group: U1

Part Number	Size	Wall Type	UPC Number	Carton Quantity	Std. Ctn. Wt. (lbs.)
SK4020	2"	Schedule 40	670648190083	10	24.3
SK4025	2-1/2"	Schedule 40	670648190090	10	49.2
SK4030	3"	Schedule 40	670648190106	8	43.6
SK4040	4"	Schedule 40	670648190113	5	40.5
SK4050	5"	Schedule 40	670648190120	3	34.6
SK4060	6"	Schedule 40	670648190137	2	36.4
SKC40	4"	Type C	670648190144	5	36.2



DETAIL **A**
SCALE 0.500

Split Kit Assembly Instructions

Split Kit Contains:

- One 2 ft. length of split duct
- Two couplings

1. Cut away the broken pipe, being careful not to cut conductors.



2. Slip the Split Coupling over the conductors and then onto the prepared broken pipe ends.



3. One Coupling each side of the break



4. Cut length of Split Duct to fit gap between ends of prepared broken pipe.

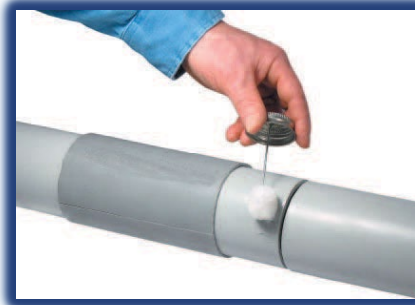


Split Kit Assembly Instructions

5. Attach Split Duct around the cabling and butt up against the existing pipe.



6. Position the Split Duct around the cabling and apply solvent cement to the outside diameter of the Split Duct AND the pipe at the ends. Follow cement manufacturer's instructions.



7. Slide the Couplings over the Pipe/Split Duct joint do couplings are located at the center of the end joints. Rotate coupling to evenly distribute the cement.



8. Complete



Split Duct & Accessories

FAQs

- Split Duct is not designed to go over the conduit; it is designed to butt up against the conduit. The Split couplings go over the outside of the Split Duct and the conduit.
- If it is an application per the NEC Split Duct is not acceptable as a permanent solution. You will have to pull your cables out, remove the broken conduit, and replace it with new conduit.
- There are no standards which exist for Split Duct. Therefore, Split Duct does not have an ETL/UL Listing. It is a product usually sold to utilities or telecommunications to repair broken conduit (utilities do not require an ETL/UL Listing). If the project requires the repair to be listed then the only thing acceptable is to remove the conductors and replace the broken section with new product. It is not intended to be used indoors, nor is it intended to penetrate firewalls.
- Prime Conduit does not recommend pouring concrete over split duct. We have heard of customers doing this after sealing the entire split length, but this is only done at your own risk.
- Split Kits are also not a listed product. The Split Kits are made out of Schedule 40 conduit and have been used with over 600 volts by the utility companies. Some inspectors have allowed non-listed split duct to be used based on Section 90.4 of the NEC. Special permission should always be obtain prior to the installation.
- Split Duct is made from ETL Listed to UL651 Schedule 40 PVC Conduit. Listed Schedule 40 PVC Conduit is approved for use with conductors that have insulation rating of 90 degree C. Its maximum ambient temperature is 50 Degree C. Utilities will use Split Duct with 90 Degree C conductors and cables.
- You can use off the shelf duct tape and any strapping method that is secure enough to hold the two halves of Split Duct together.
- For example, you order 2" split duct and split duct fittings for 2" conduit.
- Prime Conduit's Schedule 40 Split Kits (part numbers SK4020, SK4025, SK4030, SK4040, SK4050, & SK4060) are designed for use with both rigid PVC nonmetallic Schedule 40 and Schedule 80 Conduit in both above ground and below ground installations.